

available at your dealer

autocult

technical changes and errors excepted • printed in Germany • # 99903



SMALL & MICRO CARS

Brütsch Pfeil (D, 1956)
red
autocult #03003
scale 1/43, 75mm

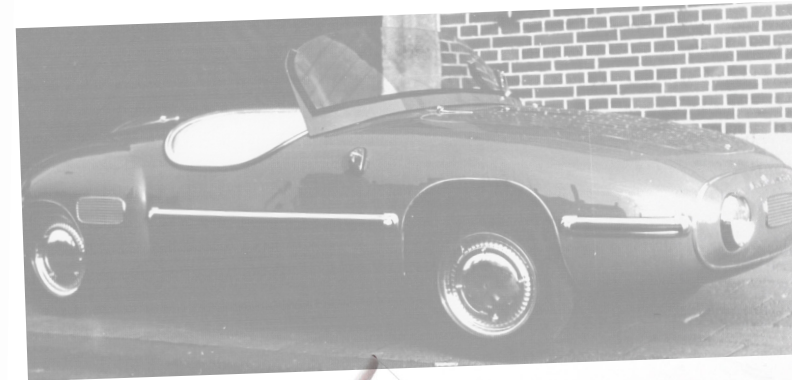


EMERGENCY VEHICLES

Hanomag L28 GruKw (D, 1955)
dark green/ black
#12004
1/43, 134mm

DELIVERY VEHICLES

Ford Thames 400E (GB, 1957)
dark red/ dark grey
#08001
1/43, 94mm



AutoCult GmbH

Äußere Further Straße 3
90530 Wendelstein
Germany

Tel. +49 / 9129 / 296 4280
Fax +49 / 9129 / 296 4281
info@autocult.de

www.autocult.de



www.facebook.com/
autocult.models

release

03/2016

PROTOTYPES



■ Jamos GT (A, 1962)
red
autocult #06010
scale 1/43, 79mm



SPECIAL EDITIONS



■ Vignale Fiat 125 Samantha (I, 1967)
brown-metallic
autocult #05005
scale 1/43, 103mm



BRANDS OF THE PAST



■ Alvis Speed 20 SA 4.3 Litre Special (GB, 1933)
dark green
autocult #02004
scale 1/43, 105mm



BUSSES

■ Steyr 380a Cabriobus (A, 1949)
dark green
autocult #10000
scale 1/43, 177mm

